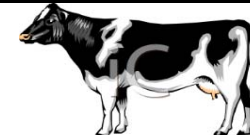


# LIVESTOCK COOPERATIVE AUCTION ASSOCIATION OF

NORTH JERSEY, INCORPORATED

225 WEST STIGER ST HACKETTSTOWN, NJ 07840

JUNE 4th 2019



**While Market reports reflect the majority of livestock sold, there are instances where animals do not fit reporting categories and may not be included**

## LIVESTOCK REPORT

CLASS OF STOCK	lb/hd	NO.	HIGH	LOW
Calves	lb	25	0.90	0.15
Cows	lb	7	0.63	0.20
Easy Cows	lb			
Steers	lb	2	0.95	0.83
Feeders	lb	6	1.22	0.40
Bulls	lb	3	0.89	0.74
Heifers	lb	10	0.86	0.72
Roasting Pigs	lb			
Boars	lb			
Sows	lb			
Butcher Hogs	lb	4	0.62	0.50
Sheep	lb	42	2.35	0.30
Lambs	lb	15	2.80	0.75
Roasting Pigs	hd			
Pot Belly	hd			
Butcher Hogs	hd			
Sheep	hd			
Lambs	hd	4	110.00	100.00
Billy	hd	1	180.00	180.00
Goats	hd	35	210.00	20.00
Kids	hd	7	75.00	40.00
Rams	hd			
Alpaca	hd			
Hides	hd			
<b>TOTAL</b>		<b>161</b>		

## POULTRY REPORT

CLASS OF STOCK	lb/hd	HIGH	LOW
Bantam	lb		
Broiler	lb	0.75	0.70
Ducks	lb		
Heavy Fowl	lb		
Rabbits	lb	2.00	1.25
Roosters	lb		
Turkeys	lb		
Bantam	hd	6.00	1.50
Broiler	hd		
Bunnies	hd	6.00	1.00
Chicks	hd	1.25	0.10
Ducks	hd	10.00	0.50
Misc Items	hd	32.50	1.50
Guinea Fowl	hd	13.00	13.00
Guinea Pigs	hd		
Heavy Fowl	hd	13.00	3.00
Light Fowl	hd		
Roosters	hd	13.00	4.00
Pheasant	hd		
Pigeons	hd	5.50	3.50
Pullets	hd	7.50	0.50
Quail	hd	2.25	2.00
Rabbits	hd	15.00	0.50
Turkeys	hd	14.00	14.00
Peacock	hd		
Goose	hd	23.00	23.00
Fryers	hd	5.00	5.00
Roasters	hd		
Silkie	hd	8.00	8.00

## HAY REPORT

TYPE OF HAY	Number of Loads	HIGH	LOW
Alfalfa	1	3.00	3.00
Mixed	3	7.25	5.25
Orchard			
Timothy	1	4.50	4.50
Grass	13	7.50	3.75
Mulch	4	4.50	3.00
2nd Cut			

## LARGE ROUND/SQUARE BALES

TYPE OF HAY	Number of Bales	HIGH	LOW
Alfalfa			
Timothy	2	20.00	20.00
Mixed			

## STRAW REPORT

TYPE OF STRAW	Number of Loads	HIGH	LOW
Oat			
Wheat			
Rye	2	5.50	5.25

## GRAIN REPORT

TYPE OF GRAIN	NO. OF BAGS	HIGH	LOW
Ground Corn			
Shell Corn			
Oat Feed	2	10.00	10.00

## MISC FARM RELATED CONSIGNMENT

ITEM	NO.	HIGH	LOW
Firewood			
Posts			
Shrubs	2	12.00	12.00

**SALE SCHEDULE:** 10:30 Hay 11:30 Poultry 1pm  
Goats, Lambs/Sheep 3pm Calves, Feeders, Hogs  
and Cattle